

NAME:

CLASS:

FRENCH / ART

EXCURSION
BOOKLET

YEAR 5 + YEAR 6

BEFORE WE START:

BEHAVIOUR EXPECTATIONS:



Only walk in the gallery space.



Do not touch the artwork.



Beware of surroundings.



Be respectful. People are watching.

What are some things you already know about Monet and the Impressionism art movement?

-
-

What do you hope to see or learn about in this exhibition?



Questions that have this magnifying glass symbol require you to find the answer around the room.



Questions that have this thinking symbol require you to answer the questions by sharing what you think.



Questions that have this pencil symbol require you to complete a quick drawing.



Question with the French flag require you to answer the questions in French.



Some artworks in this exhibition will show naked people. Remember to be respectful when this is displayed and if it makes you feel uncomfortable, let a teacher know.

INTERPRETIVE ROOM

What does it smell like as soon as you enter the exhibition?



Why do you think they included a scent for the exhibition?



This information kiosk was how people use to receive their news back in France in the 1980's.

Find the information kiosk in this room.

On 3 sides of the kiosk, they explain the categories of artworks that are going to be shown in the exhibition.

What are the 3 categories of artwork:



1.

2.

3.





In this room, there is a photo spot.

Describe the scene or artwork that the photo spot is creating. 🔍

A large, empty light gray rectangular area intended for a user to describe the scene or artwork.

Draw the photo spot space that has been designed. 🖋️



A large, empty white rectangular area with a gray border, intended for a user to draw the photo spot space.



List the names of the artists that you are going to see in this exhibition:



-
-
-
-
-
-
-
-
-
-
-
-
-
-
-
-



How many of these artists are male?



How many of these artists are female?



Why do you think there are more male artists than female?



Which artist are you most looking forward to see in the exhibition?



Why?



As you walk through the entrance tunnel, how many water lilies did you count on the floor?



INFINITY ROOM

What artwork have they tried to recreate in this room?



Name some of the flowers and plants you see displayed in this room.



Are the flowers or plants real?



Why hasn't the exhibition designer used real flowers in this room?



How would having real flowers or plants change the experience of this room?



How do the mirrors contribute to the experience of this room?



What is hanging from the ceiling?




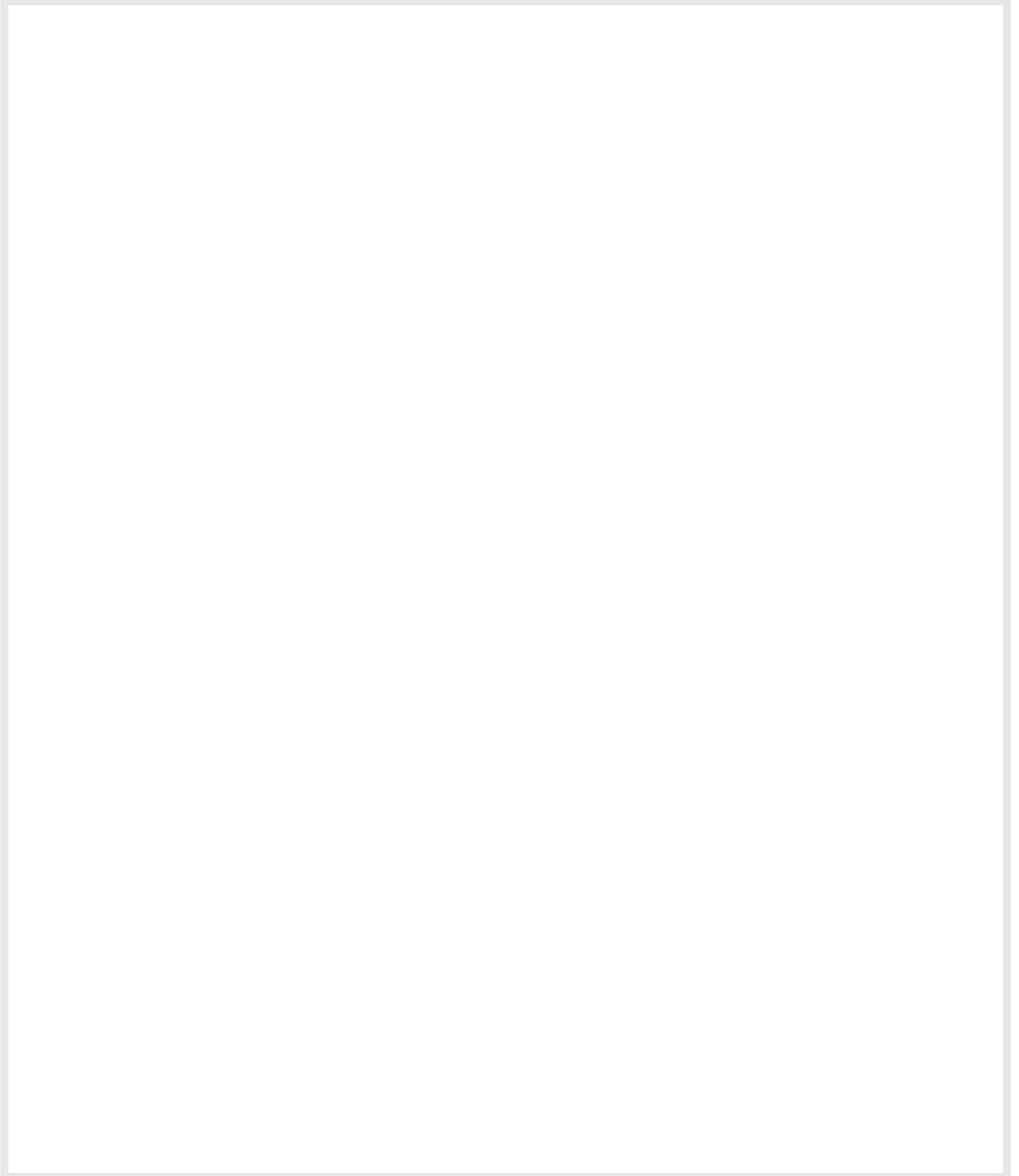
What is an idea that the exhibition designer could also add or try in this room to make it even better?



example: add a glass floor with water running underneath and it feels like you are surrounded by the water in the water lily pond.

ACTIVITY ROOM

Grab a seat at Monet's Studio. Place your booklet on the easel and complete the drawing video. 





Find the artist information boards. Pick one artist you'd like to focus on.

What is the full name of this artist?



What are 3 facts about this artist?



1.

2.

3.

Why did you select this artist to focus on?



Circle what type of artwork does this artist most commonly create?



**Portrait
Paintings
(people)**
des portraits



**Landscapes
Paintings
(environment)**
des paysages



**Still Life
Paintings
(objects)**
des natures mortes



Pick your favourite artwork that this artist has created.

What is the name of the artwork?



When was it created?



What materials is the artwork made out of?



Describe what is happening in this artwork.



Complete the sentences:

je peux voir _____

Il y a _____



List the colours that you see in this painting.



-
-
-
-
-
-
-
-





Sketch your chosen artwork below.



Blank area for sketching the chosen artwork.

What do you like about this artwork?

J'aime

J'aime beaucoup.....

J'adore



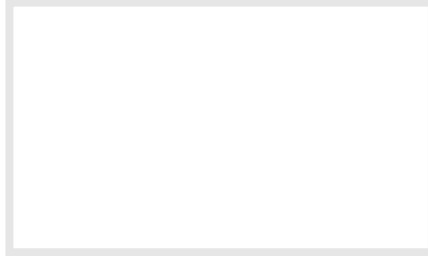
What steps did the artist take to create this artwork?

Think about what the artist did first and then painted first, next, etc.



EXHIBITION SPACE

Draw an emoji that describes how you felt when you first entered and saw the exhibition space.



What was being displayed when you first entered?



What sounds did you hear when you first entered?

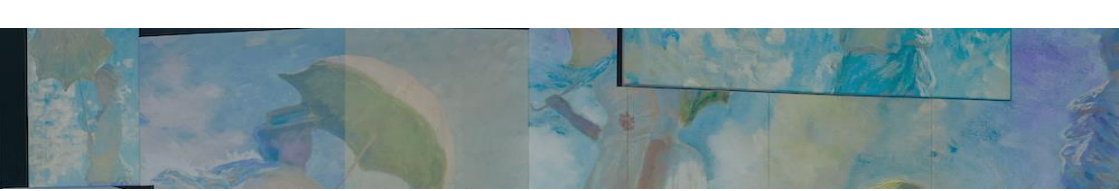


How does the sound match the visuals that were being displayed?



How many projectors can you count are used for this exhibition?





Circle which way you prefer to view the exhibition.



debout



assis



couche

Why?



Did you prefer the exhibition from the Mezzanine (upstairs) or from the Main floor?



Why?



Did you prefer this exhibition experience compared to a traditional art gallery exhibition?



Why?



METROPOLITAN

Metropolitan was a word used to describe a capital city.

What are 2 landmarks of this city that were painted?



-
-

Which capital city is the exhibition trying to show?



Circle the correct type wording for the transport shown in the exhibition:



le bateau

le bus

le train

le cheval

le metro

la voiture

le tram

la caleche

Tick the paintings below if you saw them projected in the exhibition.



CLAUDE MONET
Impression, Sunrise 1872



CLAUDE MONET
The Gare Saint-Lazare: Arrival of a Train, 1877



CAMILLE PISSARRO
Boulevard Montmartre, 1897

A DAY IN THE LIFE OF

Impressionist artists loved to create artworks about people living their ordinary lives.

List some of the ordinary things that they captured in their artwork:



-
-
-

What are some ordinary things that Impressionist artists would paint today?



Why are naked people always painted in artworks?



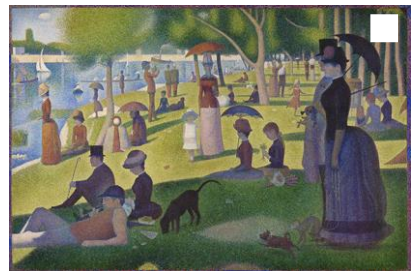
Tick the paintings below if you saw them projected in the exhibition.



EDOUARD MANET
A Bar at the Folies-Bergere, 1882



PIERRE-AUGUSTE RENOIR
Dance at Bougival, 1883



GEORGES SEURAT
A Sunday Afternoon on the Island of La Grande Jatte, 1884-86

EN PLEIN AIR

What does 'en plein air' mean?



What was invented that made 'en plein air' painting possible?



Why did Impressionist artworks have a messy look to their paintings?

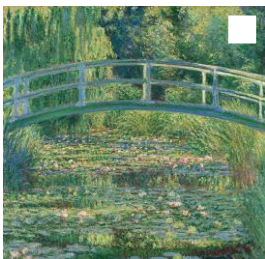


What are some of the scenes that you have seen today that were painted 'en plein air'?

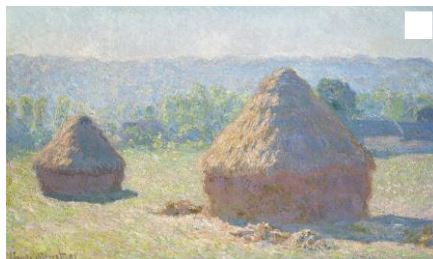


-
-
-

Tick the paintings below if you saw them projected in the exhibition.



CLAUDE MONET
The Water Lily Pond, 1899



CLAUDE MONET
Haystacks end of Summer, 1891



CLAUDE MONET
Women with a Parasol – Madame Monet and Her Son, 1875

TO FINISH OFF:

Choose two of the following activities to help you summarise and finish off 'THE LUME exhibition' experience.

GOOGLE REVIEW

Write a Google Review of your experience of 'THE LUME' exhibition.

PAGE 20

INSTAGRAM POST

Create an Instagram Post that summarises your experience of 'THE LUME'.

PAGE 21

INTERVIEW

Interview a member of the public about their 'THE LUME' experience.

PAGE 22

FUTURE LUME

Design the future 'THE LUME' experience.

PAGE 23

THE LUME

1 Convention Centre Pl, South Wharf VIC 3006



People often mention

All

projection 61

digital 32

monet 307



Name:



Local Guide · 99 reviews · 214 photos

 Like



Before you start, remember to introduce yourself and ask whether they would mind being interviewed. If they don't want to be interviewed, politely say thank you and try asking someone else. If they would like to do the interview, don't forget to thank them for their time at the end.

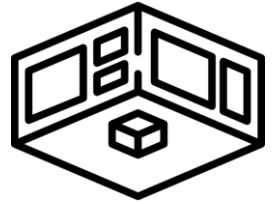
Did you enjoy THE LUME exhibition?

What did you like or dislike about the exhibition?

What would you tell your friends about this exhibition?

Write your own question here.

FUTURE EXHIBITION



What music would be playing?



What scenes could be projected?

What sound effects would you have?



What scent or smell would the room have?

What would be the name of the exhibition?



What is being displayed in the infinity room?



What type of people would come see your exhibition?

Any other special features?



